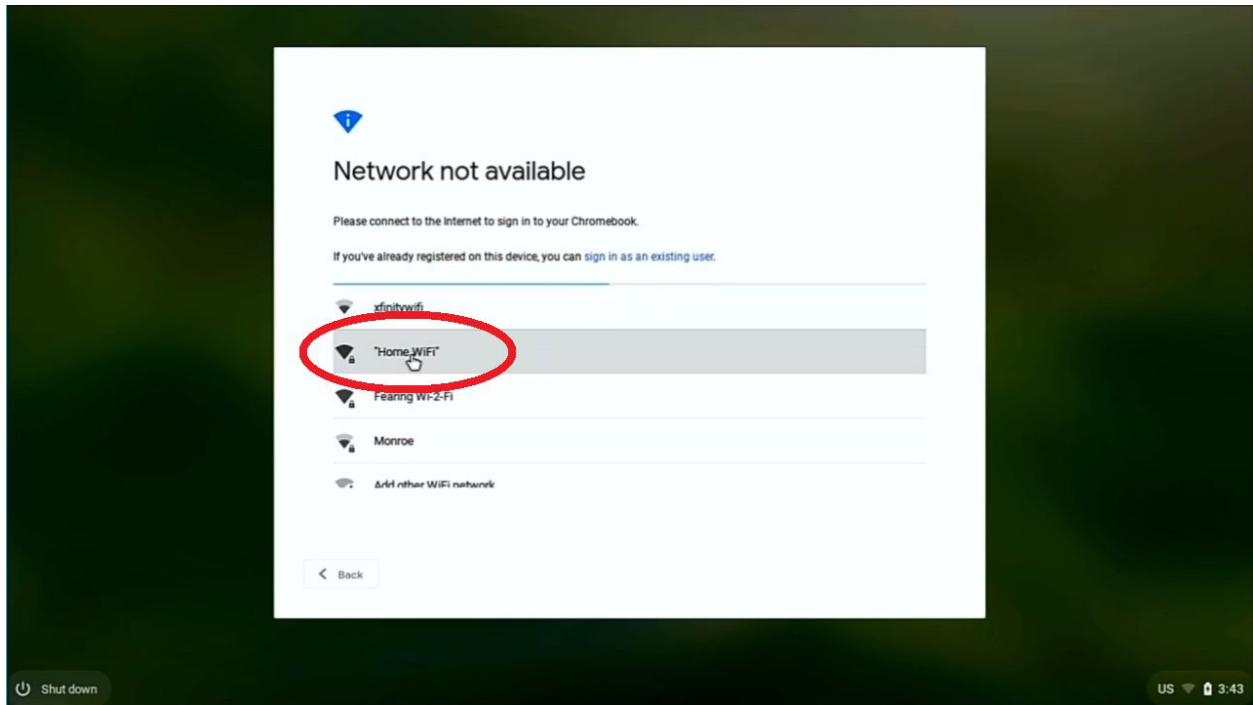
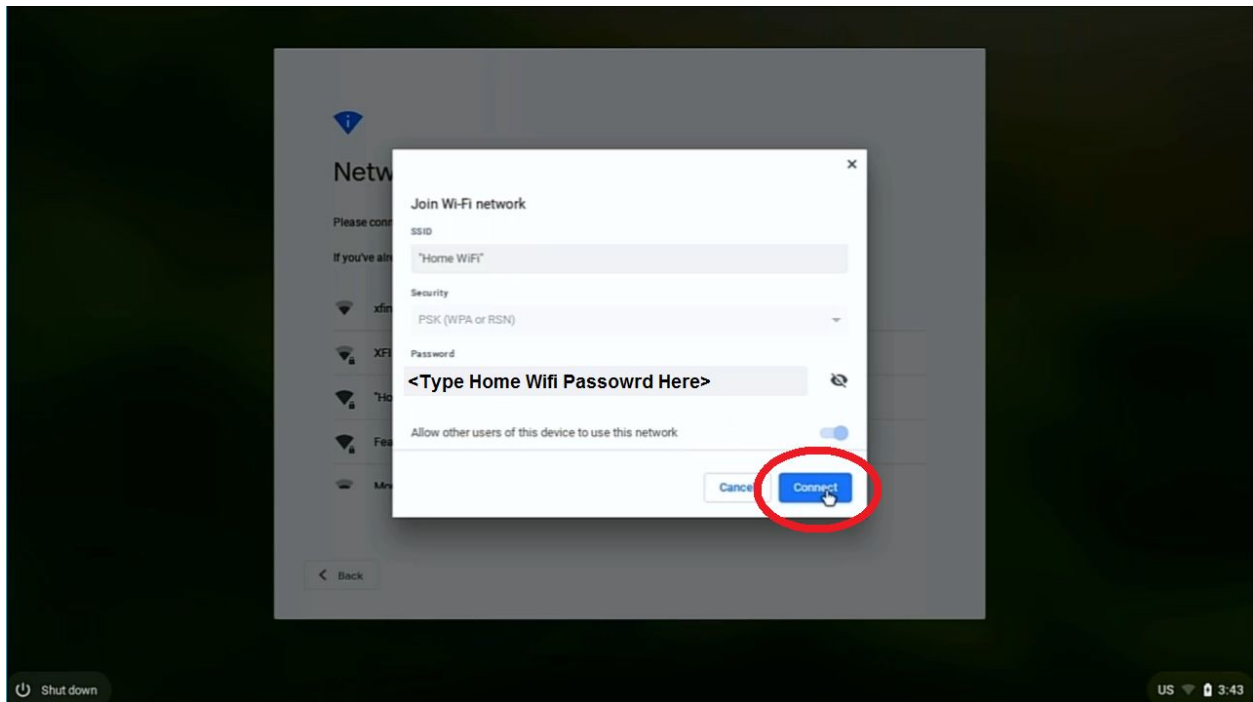


DCS Chromebook Wifi & Student Login Instructions

After turning on the chromebook you should see this screen:



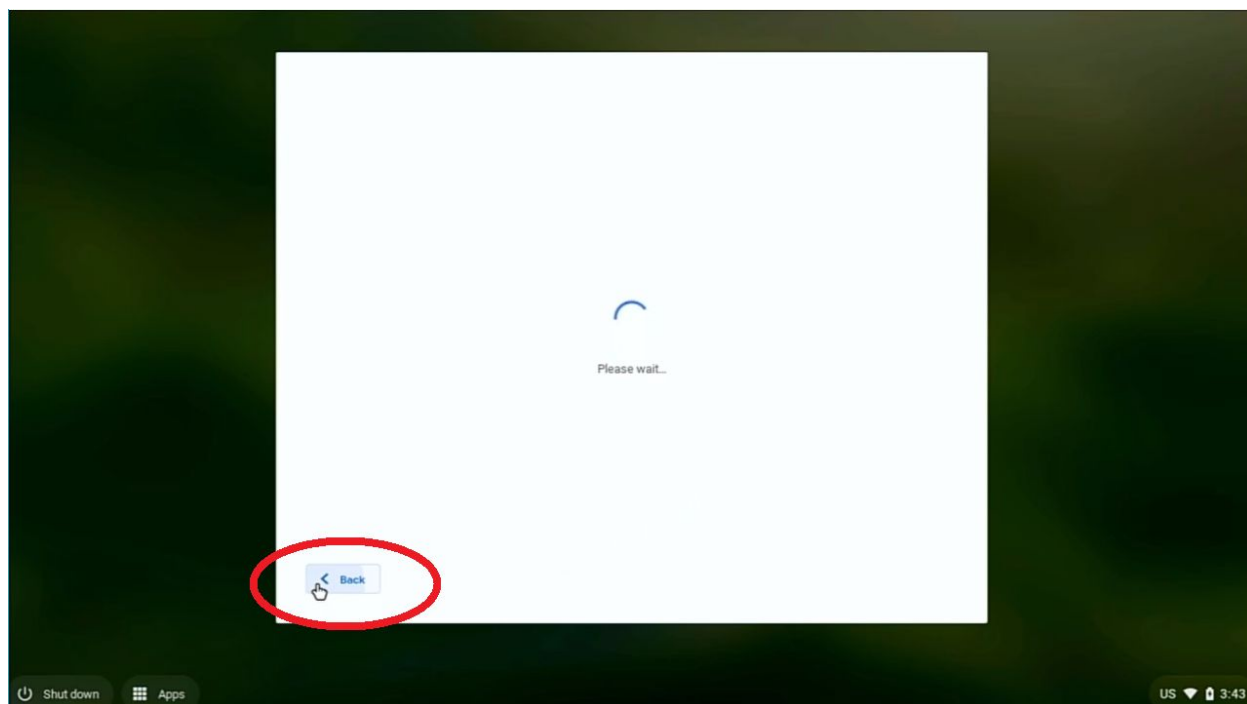
Select your home wifi or mobile hotspot SSID. That should bring you to the next prompt.



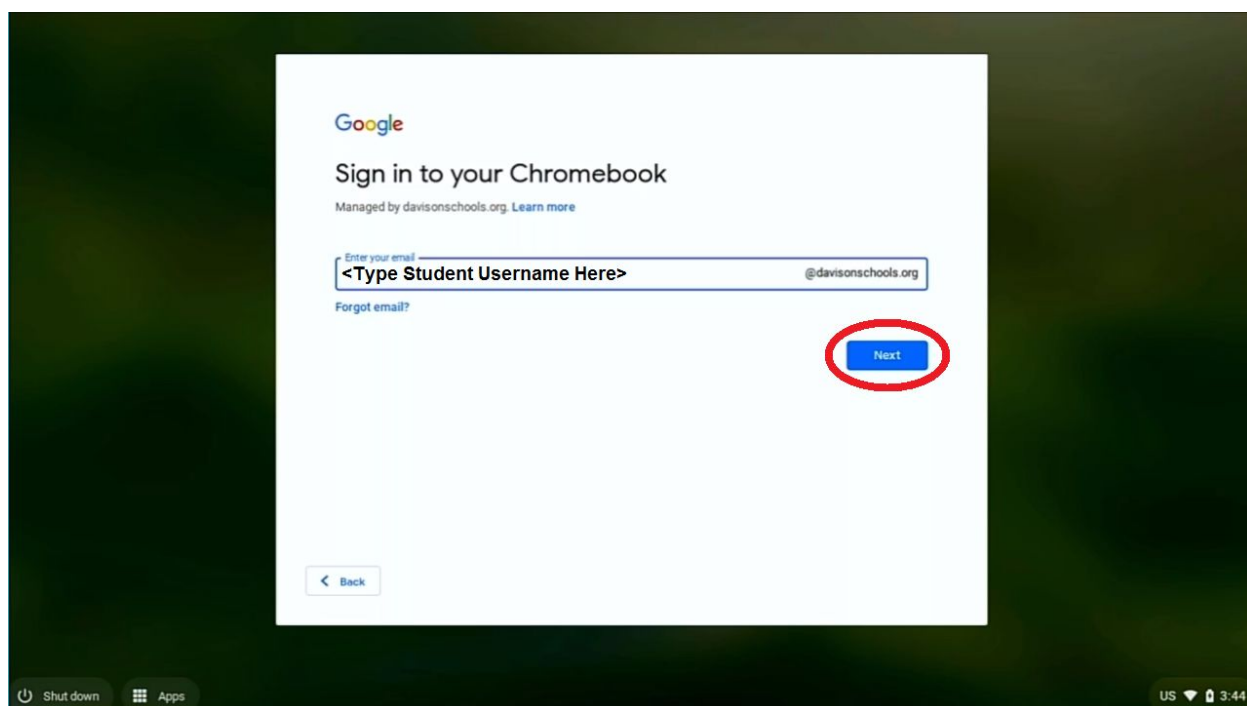
In the field labelled "Password," enter your home wifi or mobile hotspot password, then select "Connect"

If you are unsure of the name or password of your wifi, it should be listed on the back or bottom of your modem.

If connecting takes longer than a minute, press the back button on the bottom left.

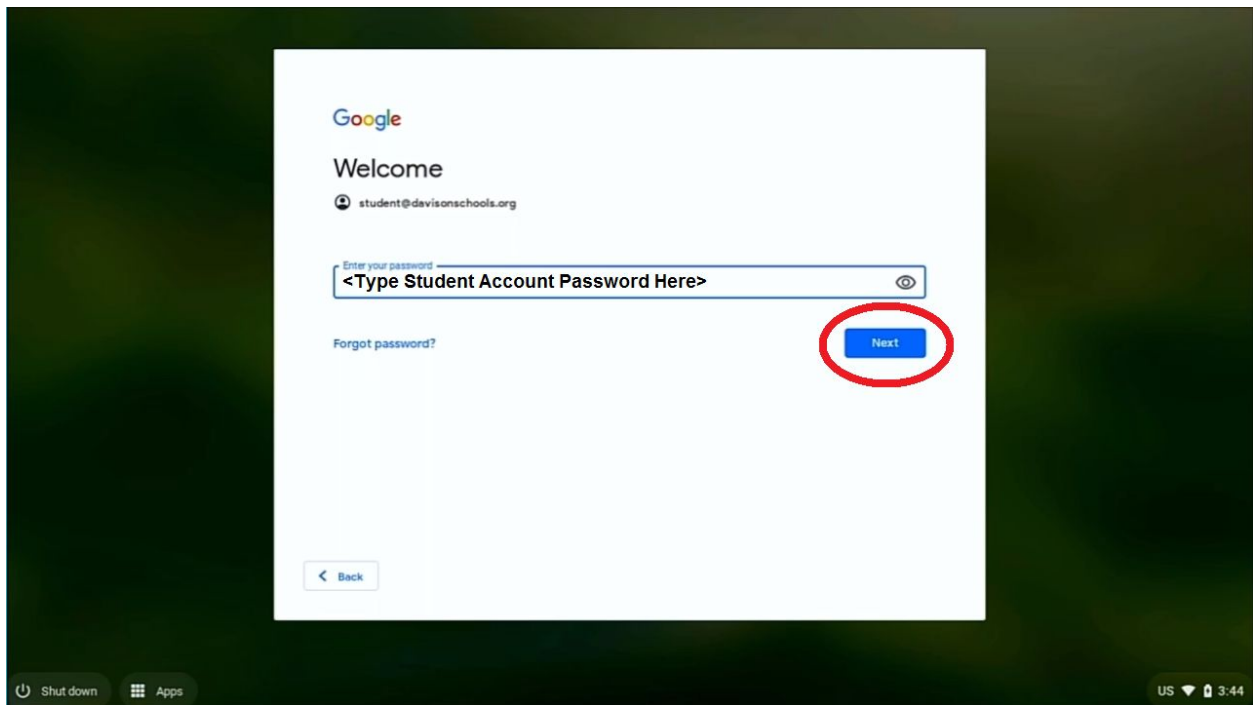


Next:



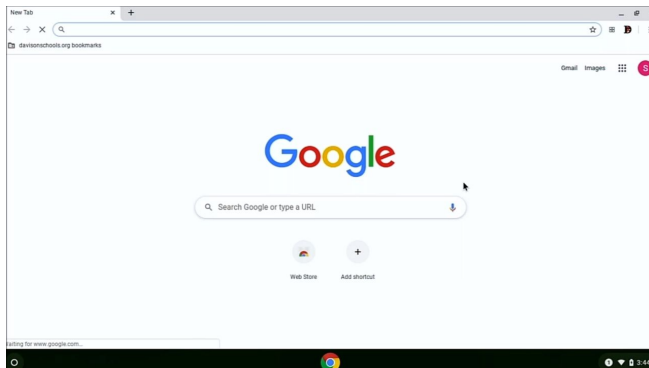
In the field labelled "Enter your email," enter your student's username then select "Next"

Next:



In the field labelled “Enter your password” enter your student’s password, then select “Next”

If you have completed this process correctly you should see a screen similar to this:



You’re in! Congratulations!

If you have any issues with your chromebook or student account, please contact our technology support team at

helpdesk@davisonschools.org

If you would like a video tutorial visit

https://youtu.be/R2TU6P8s_f4